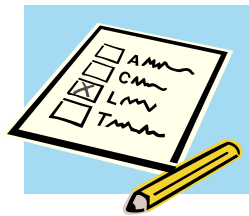
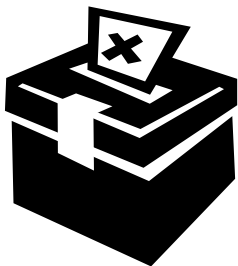


Dear Parents/ Carers,

Thankfully it has been slightly warmer over these past six weeks than the early part of 2010. It has continued to be a very busy time for all children and staff in school with lots of exciting work being completed. Last Sunday we put the clocks forward to begin "summer time" and this is always a very positive sign in school as it means that the long daylight hours are back and we should be looking forward to the months ahead.



It is going to be a very interesting next few weeks as the country approaches a very important election. The current recession will have a big impact on schools and education over the next 5-6 years. It is not for me to direct parents/ carers on who to vote for. I would strongly encourage every parent/ carer to listen very carefully to the different political parties and what they are saying about education as this concerns the future for your children and to then make sure that **YOU GO OUT AND VOTE** in the election.

I have written in the past about attendance issues in school and the very high rates of absence that a small but significant number of children have. The school **DOES NOT APPROVE** any leave for pupils in term time. If you take unapproved leave you will be liable for a **£100 fixed penalty fine** and possibly a court summons.



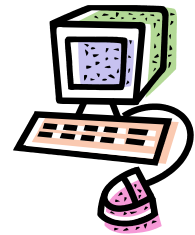
It is the law that children attend school for 190 days each year. There is no right to leave of absence during the school term time as ample opportunities exist throughout the year for holidays.

Mr Dave Woods
Head Teacher

Parent Hotline number: 08447 707 576
School ID: 71486

Free Computers for Families

This has continued to be a popular programme with families in school. We have been informed that just 5 families have been successful in applying to this programme. Your child must be in Key Stage 2 (Year 3 – Year 6) to apply for this scheme. This is scheme to provide free computers (lap-tops, PC's or notebooks) to families to encourage computer use at home.



To register for the scheme and to receive the application form you need to phone: **0333 200 1004**

The advisor will ask you a series of questions to establish that you are eligible to apply for the scheme.



www.homeaccess.org.uk/

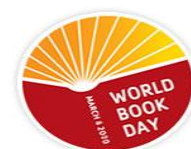
When completing "Section 4" (page 9) of the application form you are asked to complete details about the school. Please use the these details:

Beaconsfield Primary School
Beaconsfield Road
Southall UB1 1DR

If you need support to complete the application form, please do ask staff in school who will be pleased to assist you. **However, we cannot always immediately check forms.** You need to allow us up to **5 days of time to check** through the information on your form. The money allocated for this programme will soon run out so you are strongly urged to apply as soon as possible.

CURRICULUM NEWS

During this half-term we have once again celebrated "World Book Day" with a range of activities across school.



We held our annual **Book Week** with a range of different activities. Classes were able to visit the local library and we also held reading events in school between classes, with different staff reading and we also welcomed parents into school to read in community languages.

Our dress up as a book character day was very popular with prizes given out during the assembly.

The China Project

The children who are part of the group working with Miss Starr have continued to create informative work to send to our link school, "**Sang Yuan Primary**" in China.



The Sang Yuan Primary School building.



Children in their school classroom.

Our Latest update - From the China Group

This half term members from the China project have been learning basic words and phrases in Mandarin. They have even had a go at a 'chopsticks challenge' – consisting of a bowl of smarties and chopsticks. We found that very tricky, but had loads of fun! Quite a few feel confident in using chopsticks now!

We received photographs from our link school – Sang Yuan Primary and were able to share these with the whole school. Our school were extremely excited to see the children who we have already started forging a strong link with.



We were also amazed at the differences, not only between schools but also the local environment. The China group decided that they too would send a pictorial account of our local environment. So a few days ago 'The China group' set off armed with cameras and have taken an exciting range of photographs in and around Southall. We hope to email these to Sang Yuan Primary soon.

Year Six, together with some members of the China group have had the pleasure of being selected as pen pals to the children from San Yuan Primary School. Over fifty letters from the pupils of our Link school have been received, this batch of exciting letters have been written in Mandarin and translated into English for us to read. Seeing these original letters that had been written with so much care and attention made this whole project more exciting and real.



It felt magical to be holding and reading a letter from those that are of a similar age to us. Ms Starr will be adding some of these letters to the China display in the hall. Please try to visit and have a look when you can. Our letters will be posted before Easter. We may even post some Easter cards that have been made from each class. Next half term we hope to bring you even more exciting news about our links with Sang Yuan Primary School and a possible trip to China Town.

再见

jiè

zàijiàn - Goodbye

PREMISES NEWS

Starting on Thursday 1st April our solar panels will be installed. This work will be completed over the Easter holiday period to cause a minimum of disruption. You will be able to see the meter in the main corridor near the school office to show how much energy we are generating within school.



The school governors have approved our plans for refurbishment during the summer holidays. These works will begin with some demolition work to the old upstairs hall (Year 6 class) during the Easter period.



Our school has also been identified by Ealing local authority as a site to develop a special needs primary support base unit attached to the school. This will involve renovation works to the downstairs Year 1 classroom and the library during the summer months. As part of this work the school will be provided with an excellent “sensory room” upstairs for therapeutic use by some children.



The children are very happy that we have been able to lay more artificial grass in area around the adventure trail on the playground. This means that even in the winter months when the weather is damp and wet the children will still be able to play and use this area.

CLASS NEWS

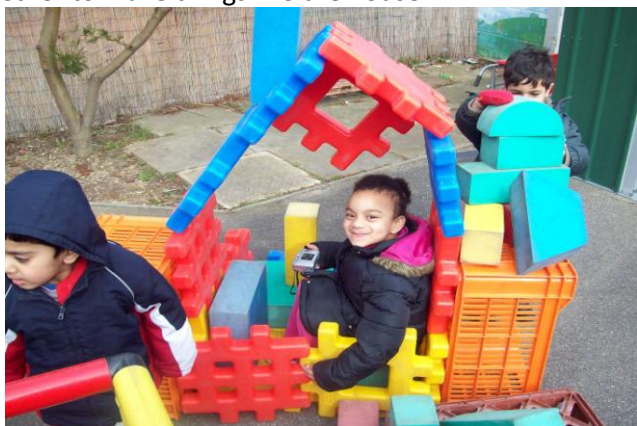
Foundation Stage (Nursery)



In Nursery the children have been looking at mini-beasts and they have also been digging in the garden and looking at plants.



The children have been getting their hands dirty with cornflour and they have also been learning to work together to make things like the house.



Foundation Stage (Reception)



The Reception class had great fun at the Fire Station. We sprayed water from the hose pipe and went in the Fire Engine. We dressed up in the Fire fighter's jackets and helmets and saw all their special tools.

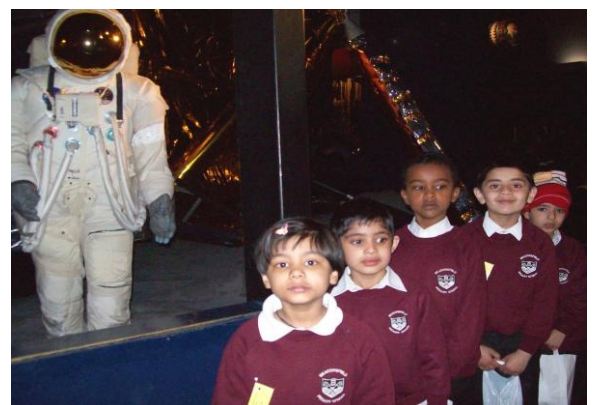


Back in the classroom we are pretending to be Firefighters and building our own fire engines.



Key Stage 1 (Year 1)

On Tuesday 30th March Year 1 went to the Science Museum. Our visit was linked to our 'transport' topic in IPC. During the visit we got to see lots of different types of transport including rockets, planes, trains; cars, ships, tractors and even a hot air balloon!

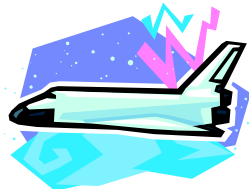


During Book Week Year 1 looked at the work being done by the charity 'Friends of the Earth'.

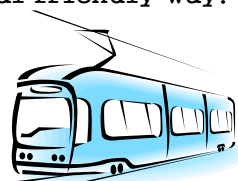
We worked together to create a radio advert for this charity and then wrote it down as a script.

Key Stage 1 (Year 2)

During the Spring term Year 2 has been learning about "Transport" as our IPC topic. We learned about different types of transport not only in UK but also in different countries. We have researched from books and also from the internet about the history of cars, trains, ships and rockets.



We have even visited the Science Museum this week and looked at the amazing models of different transports. We made our own books on transport and designed and decorated our book covers using pictures from the internet. The best part about the topic was our investigation on Beaconsfield Road about how many people use cars in an environmental friendly way.



We were shocked to find out that majority of the cars driving on the roads were only with one person - the driver in it. People don't share cars much. So we wrote solutions on the best way to travel to help ourselves and the environment.

What is the best way to travel to save the environment?

We should walk or use bicycles because that is good for health and for environment.



We should use public transport like bus or train. We should share our car with others if possible.

By Asha (Year 2)

What is the best way to travel to save the environment?



We should walk or use bicycles because that is good for health and for environment. We should travel in public transport, bus or train. We should share our car with others if possible.

By Harman (Year 2)

Key Stage 2 (Year 3)

Year 3 went to visit different places of worship in Southall for their RE topic on "Prayer and Worship". It was so much fun! First we visited the Gurdwara on Havelock Road. In the Gurdwara, I learnt that Sikhs fanned the Guru Granth Sahib using a chauri. I bowed down to pay my respects to the Guru Granth Sahib. We also got Prashad.

In the Church, the vicar told us that Easter was the most important Christian festival, not Christmas. I didn't know that! I really liked the bit when the vicar showed us the font where they baptise new babies.



When we came to the Hindu temple called a Mandir, we had to take our shoes off and be quiet. Then the Pandit Ji showed us some idols. The idols were beautiful! There was Rama, Sita, Laxaman and many other idols. They gave us a banana and a lollipop for prashad.

Finally we went to the Mosque. The Iman in the Mosque told us some things about Islam and I learnt a great deal. We went to the Wuzu room where Muslims wash before prayer. We also saw a room where all the Holy books are kept.

By Devangi Dave (Year 3)

Year 4

We have been learning about bracketed numbers in maths. We have also learnt about volcanos in IPC lessons. Mr Goodall told us about the volcano in Pompeii (Italy) and he showed us images on the computer. It was really sad to see the people turned into ashes. In RE lessons we have been learning about Jerusalem, where Jesus was crucified with two other men. We all enjoyed our work - well that's what I think. (By Suhayb)

This term we saw Harminder's drawing of a bike on the "visualiser". He added lots of things to the bike, like bones at the back and camera lights etc. Last week we had our last swimming lesson and we had a lot of fun in the pool. We gave the swimming teachers a card with pictures and circles. The teachers said they will paste the card on the wall and they said we were the first school to give them a card.

We are doing some art work for Easter and we made easter baskets. First Mr Goodall made the baskets and we drew little pictures on 8 squares and then we coloured and pasted the pictures on the baskets. Then Mr Goodall pasted little chickens on top of the baskets and put chocolates inside. We will take them home on Thursday. (By Shazadi)

Year 5

St Patrick's Day Assembly

Year 5 presented the St Patrick's Day assembly on 17th of March 2010 which is St Patrick's Day. Lots of parents came to see the assembly, especially the teachers. Mrs Moezzi and Mrs Jassi edited our class scripts.



We did a parade and the parents enjoyed it. We got good feedback from classes that we spoke loud and clearly.



In literacy our class is working on narrative poems, we converted the Highway Man poem into a play script. We worked in groups, with an average of 5-6 members in each group. Aymaan filmed the plays and we gave feedback to each group and in the future we will improve our acting. We filmed ourselves in the I.C.T room because it was much quieter in there.



Year 6

THE AMAZING AMAZON RIVER

The Amazon is located in South America which results in the river flowing through many countries. It is used by humans for many different things, for example drinking water and a source of food. However, although it is vitally important for the region, the Amazon creates some major problems such as flooding.

Geographical information.

The Amazon is located in South America and flows through the following countries: Peru, Brazil, Venezuela, Ecuador and Bolivia, which makes it the second longest river by the length of 6400 kilometres (4000 miles). The river starts at the Lago Villafro in the Andez Mountains, Peru and ends its journey at its mouth in Brazil where it flows into the Atlantic Ocean.

Used by humans.

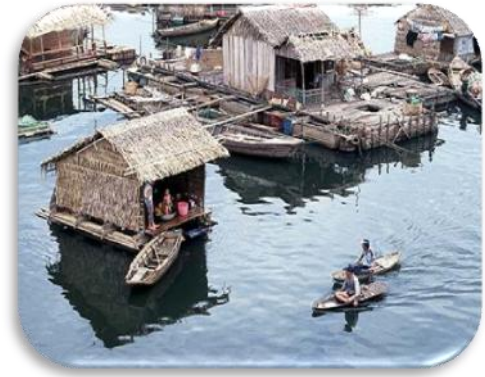
The Amazon is the second largest river in the world therefore it used for many things by humans.

Centuries ago, few people visited the Amazon and its rainforest.

It was home to hundreds

of Indian tribes,

who found food and water. In 20th century, white people discover oil and precious gems as well as valuable timber (wood). The Amazon is a navigable river. It is navigable by ships for two thirds of its course.



The major problem.

Although the Amazon is crucially important for the citizens of its continent it also creates lots of flooding in its rainforest. Every year the Amazon floods a large area of its rainforest. This is because there is heavy rainfall in the region. When the snow melts in the Andes Mountains, the river channel can carry no more water. When the channel is full, the bank bursts. The river itself is a massive resource. There is an immense volume of water moving along.



River Amazon has played an important part in its continents for centuries and it is continued to be used by millions of people today. The river may be the second longest in the world however it is not without its problems. It still remains extremely important for the people of America.

By Mohib

COMMUNITY NEWS

Spring Daffodil Appeal

Over the past few weeks we have been selling yellow daffodil pins in school to raise money for the Marie Curie Cancer Care nurses.



Cancer is a terrible disease that sadly afflicts many, many people. The cancer nurses are provided to people suffering from cancer to allow them to remain in their own homes for longer times. This is a free service that relies entirely upon donations and fundraising activities. Thanks to the generous support of staff, parents and children within our community we have been able to raise £116.50 towards this cause.



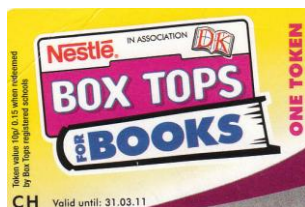
Mulberry Centre (West Middlesex Hospital)

Mr Goodall was able to arrange for some representatives from the Mulberry Centre to visit the children in Key Stage 2 for an assembly to talk about the work and activities that are undertaken at the centre.

As a fun way of supporting the centre the children were able to buy small, cute looking "Easter Chicks" with a delicious treat tucked inside. We have been able to raise £65 to support the work of the Mulberry Centre thanks to the children and staff in KS2 classes.

Voucher Collecting

This is a very busy time of the year for schools to collect the various different vouchers that are on offer. These collections are very important as we are able to get between £400 - 600 worth of resources for the children to use each year in school.



Please support us by always asking for the vouchers when you shop at either Tesco or Sainsburys during the next 6 weeks. Please ask family, friends and relatives to also save vouchers for our school. Collection boxes for all tokens are located in the foyer near the school office.



SCHOOL INFORMATION/PROCEDURES

Uniform



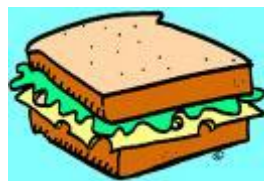
It is important to ensure the children's shoes are in a good condition. Our school uniform includes black shoes (**NOT trainers or boots**). Shoes should have some grip on the soles to prevent slipping.

Lost Property

Please make sure that your child's name is on all items of clothing. We always end up with a large number of lost items at the end of each half-term. (jumpers, shirts, plimsoles, lunch boxes etc) Our lost property box is located near the door of the rear playground. Please do look for any missing items as we have to dispose of lost property every few months.



School Dinners



We would like to remind parents **not to include** crisps, biscuits, sweets, chocolate or fizzy drinks as part of packed lunches.

On a **Friday (only)** children having a packed lunch are permitted to have crisps or biscuits or a small chocolate bar as part of their lunch. This is in line with our school food policy on promoting responsible healthy eating.

Dinner Money

A very big thank you to all of those parents/carers who send in their money regularly either half-termly or weekly on a **MONDAY MORNING**.

School dinners should always be paid for **IN ADVANCE**. You do not eat in a restaurant and then pay two or three weeks later. We will have to stop serving meals to children who are more than 1 week in arrears with payments. If you are experiencing financial difficulties you should make an appointment to see Mr Woods and discuss this.

The cost of school dinner is £2 per day (£10 per week). **Harrisons Catering** no longer accept cheques for payments.

Payments will need to be made using the internet payment service at www.ealingmeals.com or by phoning Harrisons on 020 8280 0318. Cash payments can still be made using the payment box in school.



The cost for the next ½ term will be £58.00 (19th April – 28th May = 29 days @ £2 per day). Please note that Harrison's Catering are not part of the school and that school staff have no access to dinner money.

It is the responsibility of parents/carers to inform Harrison's when children are absent from school for any reason. If you fail to do this you will be charged for a meal.

HALAL MEAT

We have reached the end of the trial period of having halal meat served on **Tuesday** and **Thursday**. I am pleased to inform parents that the current school dinner arrangements will now continue. Our menu is designed to promote healthy eating and to give as many children as possible access to hot meals during the week.



Meat that is served on a Monday and Wednesday will be non-halal and meat served on Tuesday and Thursday is halal. (Please note that there is **NO MEAT** served on any Friday). A vegetarian option is served every day along with a range of salads and fruits.

Parent/Carer Toddler Group

Our toddler group continues every Friday morning from 9:00am in the dining room. This is an excellent opportunity for very young children to learn to socialise with other children and it is also a time for mums to meet other mums for a chat and a coffee.



We always welcome new children and mums to the group. The group is for children from 18 months to 3 years of age. We are continuing to update and provide more equipment and resources for our toddlers.



Please speak to Mrs Poonai or Mrs Panesar if you have any questions about joining the toddler group.

ATTENDANCE

Children are expected in school for 96% of all school days. That means we expect **almost all** children to have less than **8 days absence** in a school year. Every school day missed is a day of learning that is lost forever. The Education Social Worker and the school regularly monitor attendance.

You are breaking the law by not sending children to school every day and you can be issued with a penalty fine notice, prosecuted or even imprisoned.



The school now has a new education social worker appointed who will be contacting parents/ carers of children who are persistently absent to discuss attendance contracts and possible penalty fines of £100.

Punctuality

The school day starts at **8.50am** and children should be in their class line by that time or will be considered late. It is good practice to arrive at school by 8.45am.



Please allow more time for your journey to school if the weather is wet, foggy or icy.

The school playground is not supervised before 8.40am, therefore children should not arrive in the playground before this time.

THE SCHOOL ACCEPTS NO RESPONSIBILITY FOR CHILDREN BEFORE 8:40am.

Children who arrive at school before this time may be reported to Social Services.

Requests for Leave (Holidays)



Holidays should only be taken during the 13 weeks when school is closed.

Children who achieve the lowest academic levels or make the slowest progress in learning are those that have frequent days of absence.

The school policy for not granting any approved leave during term time is strictly enforced at all times. The Education Social Worker will issue fixed penalty fines for unapproved leave taken during term time.



If children are away for extended periods of time they will lose their place in school to someone who is on the waiting list and they will re-join at the bottom of the wait list

Adult Learning

We have had a very dedicated group of parents attending ESOL classes over the last two terms every Friday morning. During the summer term only the beginners ESOL class will continue in the Parents Room (downstairs)

Family Learning

Our recent family links course has finished at the present time. We will be offering some further adult learning classes in the future.





Reading Workshop

It was fantastic to see so many mums and dads a few weeks ago when we held our **Reading & Writing Parent Workshop**. There were over 72 very keen adults who attended the evening to learn about ways that we teach reading, phonics and writing skills in school.

Hopefully all those who attended the evening found the activities led by staff to be very useful. We do expect children to be reading almost every night as part of their homework activities and we need to support of parents/ carers with this activity.

We hope to run other curriculum workshop evenings in the future.

Below are our approved school holiday dates through until July 2011. Please note these dates and ensure that any holiday bookings are made outside of the school terms.

| | | |
|---|--|---|
|  | <p><u>Summer Term 2010</u></p> <p>Monday 19th April 2010 – Friday 28th May 2010</p> <p>Bank Holiday – 3rd May 2010</p> <p><i>Half term – Monday 31st May – Friday 4th June 2010</i></p> <p>Monday 7th June 2010 – Friday 16th July 2010</p> |  |
| <p><u>Autumn Term 2010</u></p> <p>INSET DAY – Wednesday 1st September</p> <p>Pupils return – Thursday 2nd September – Friday 22nd October 2010</p> <p><i>Half term – Monday 25th October – Friday 29th October 2010</i></p> <p>Monday 1st November – Friday 17th December 2010</p> <p>INSET DAY - Monday 22nd November</p> | <p><u>Spring Term 2011</u></p> <p>Tuesday 4th January 2011 – Friday 18th February 2011</p> <p><i>Half term – Monday 21st February – Friday 25th February 2011</i></p> <p>Monday 28th February – Friday 8th April 2011</p> | <p><u>Summer Term 2011</u></p> <p>Tuesday 26th April 2011 – Friday 27th May 2011</p> <p>Bank Holiday – 2nd May</p> <p><i>Half-term – Monday 30th May – Friday 3rd June 2011</i></p> <p>INSET Day – Monday 6th June</p> <p>Tuesday 7th June 2011 – Tuesday 19th July 2011</p> |